



SITE PHOTO - MEEHAN AVE



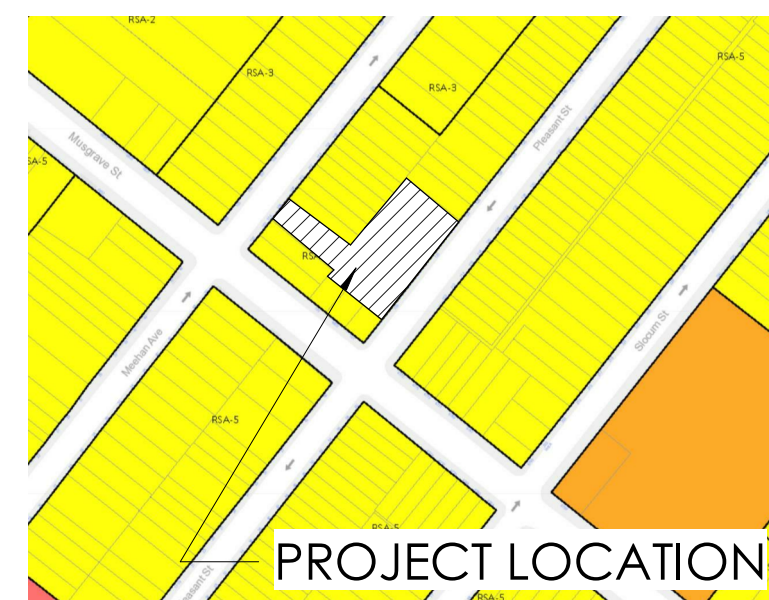
SITE PHOTO - PLEASANT ST



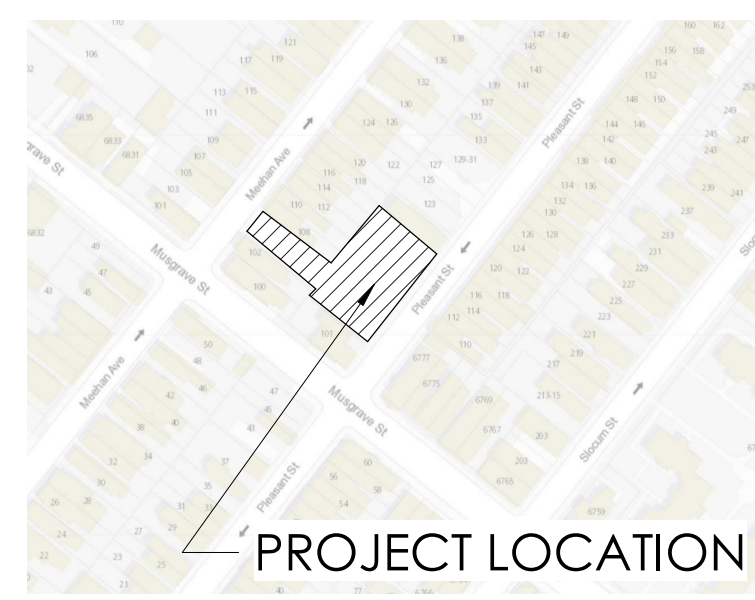
MEEHAN REFERENCE VIEW



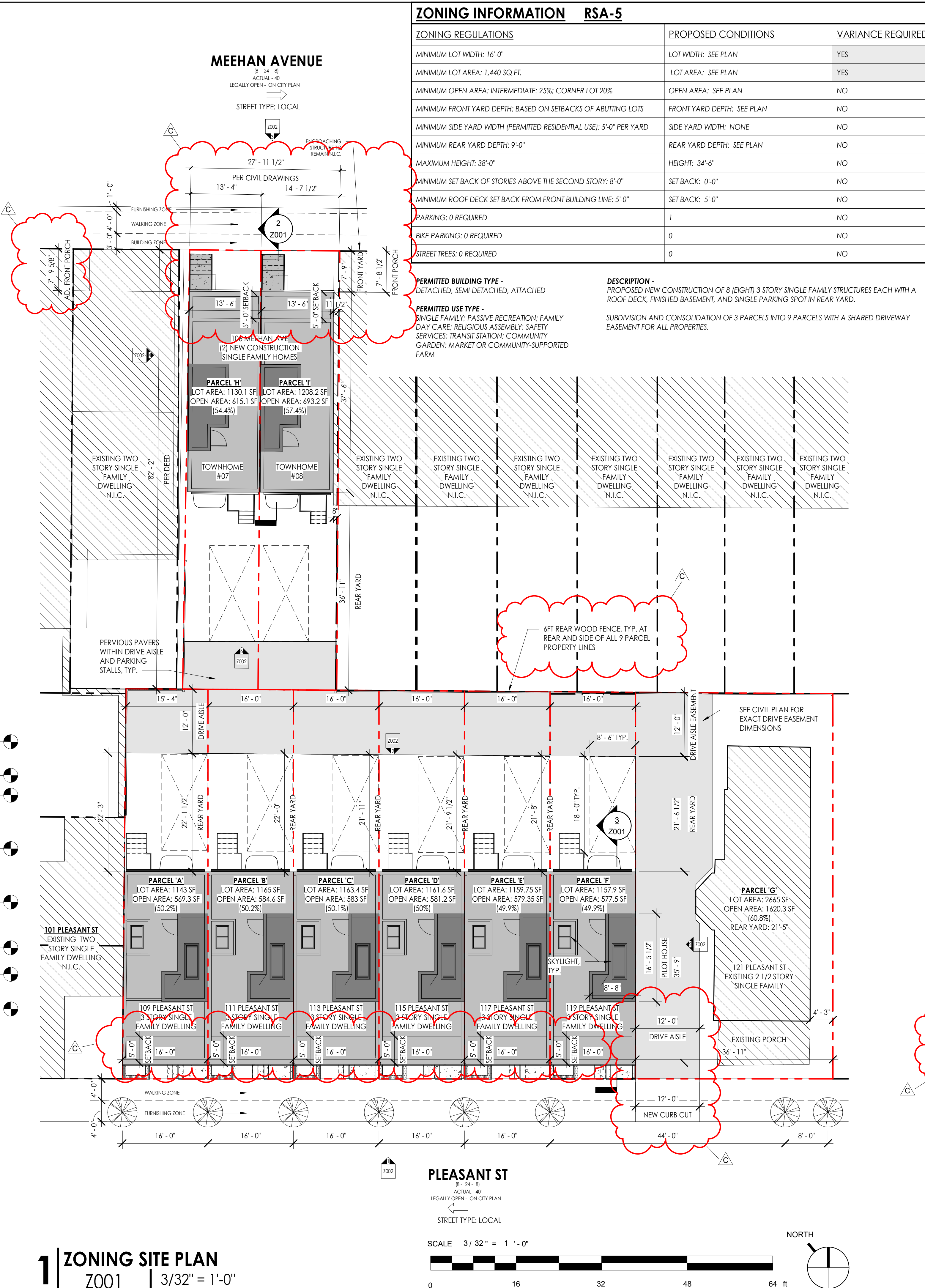
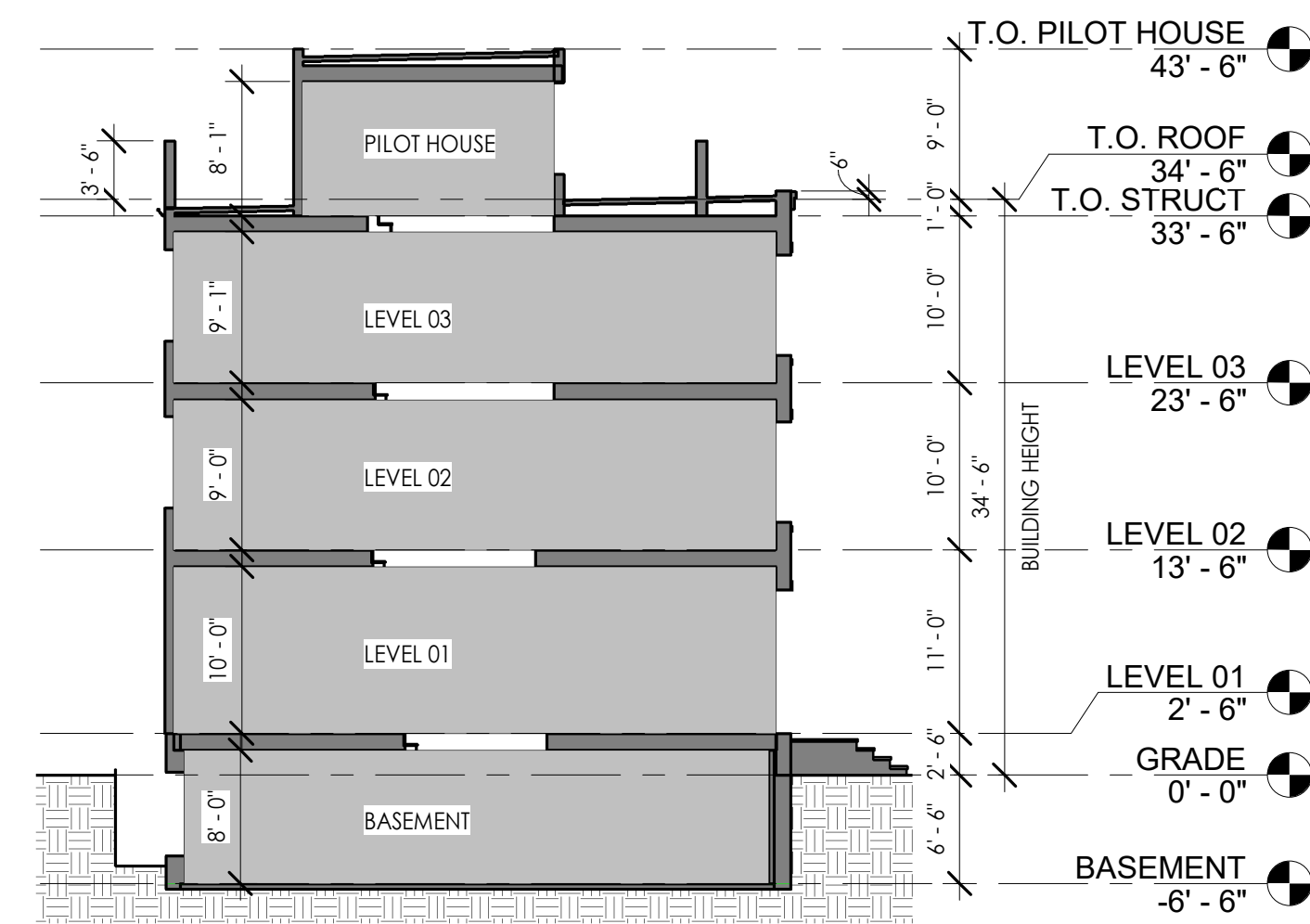
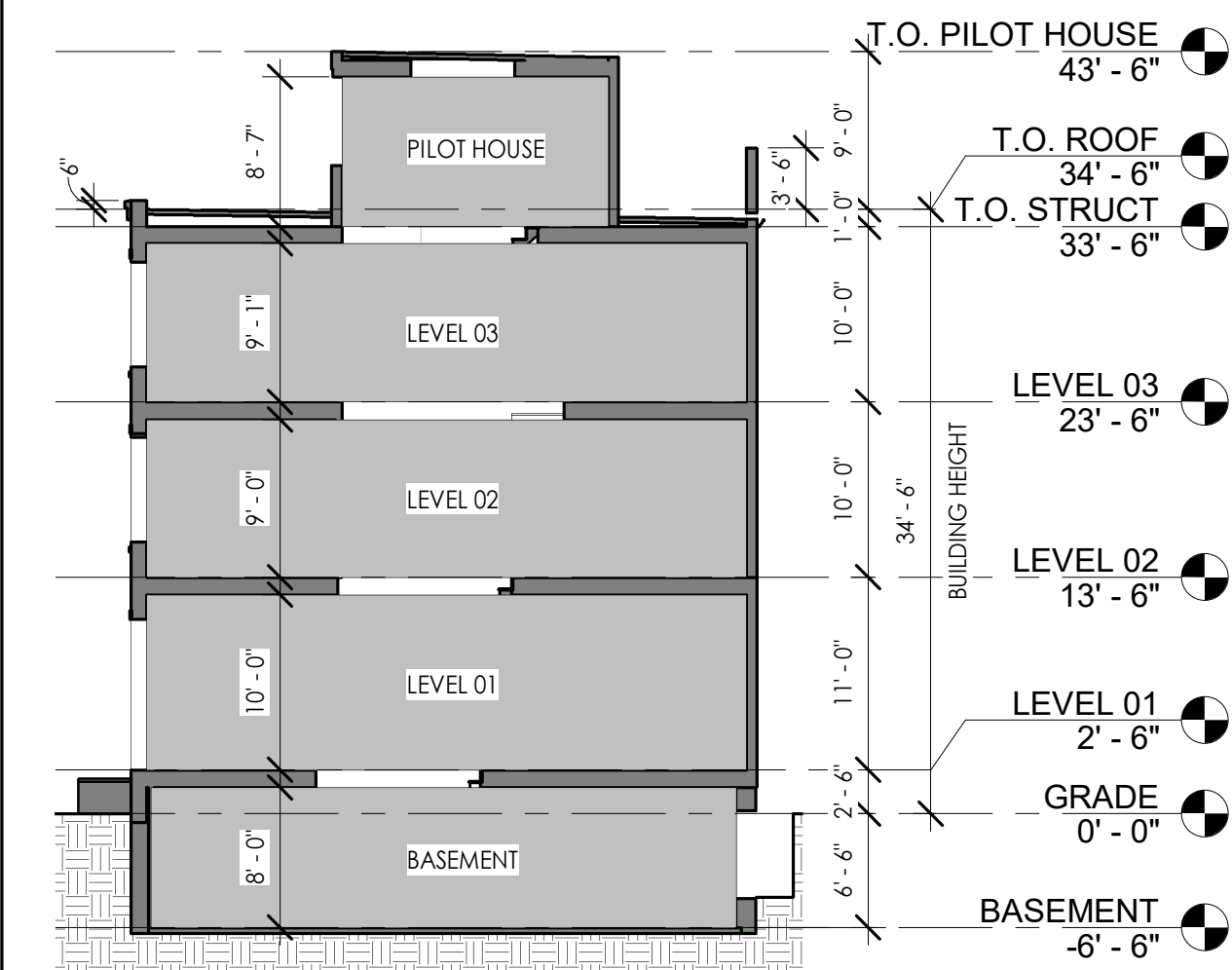
PLEASANT REFERENCE VIEW



Z-ZONING MAP



Z-VICINITY MAP



DESIGNBLENDZ ARCHITECTURE, LLP
e | INFO@DESIGNBLENDZ.COM w | WWW.DESIGNBLENDZ.COM

PHILADELPHIA, PA
4001 MAIN ST, SUITE 310
PHILADELPHIA, PA 19127
1 | 215.995.0228

MONTCLAIR, NJ
17 CHURCH ST
MONTCLAIR, NJ 07042
1 | 973.299.1777

CLIENT
COPHI LLC
dougbarat@canaldevpartners.com

COPYRIGHT RESERVED

COPYRIGHT 2021 BY DESIGNBLENDZ ARCHITECTURE, LLP, 4001 MAIN ST, SUITE 310, PENNSYLVANIA, PA 19127, PHONE NUMBER 215-995-0228. ALL RIGHTS RESERVED. THE PLANS, ELEVATIONS, DRAWINGS, ILLUSTRATIONS AND OTHER MATERIAL CONTAINED WITHIN THIS SET ARE THE PROPERTY OF DESIGNBLENDZ ARCHITECTURE, LLP, AND MAY NOT BE REPRODUCED EITHER IN OR WHOLLY, NOR ARE THEY TO BE ASSIGNED TO ANY THIRD PARTY, WITHOUT THE EXPRESS OF WRITTEN PERMISSION OF DESIGNBLENDZ ARCHITECTURE, LLP. WRITTEN DIMENSIONS ON THE DRAWING SHALL HAVE PRECEDENCE OVER SCALED DIMENSIONS. CONTRACTORS SHALL VERIFY, AND BE RESPONSIBLE FOR ALL DIMENSIONS AND CONDITIONS ON THE JOB, AND THIS OFFICE MUST BE NOTIFIED OF ANY VARIATIONS FROM THE DIMENSIONS AND CONDITIONS SHOWN ON THESE DRAWINGS. ALL SHOP DRAWINGS MUST BE SUBMITTED TO DESIGNBLENDZ ARCHITECTURE, LLP FOR APPROVAL BEFORE PROCEEDING WITH FABRICATION.



PROJECT ADDRESS
**109-21 PLEASANT ST
PHILADELPHIA, PA
19119**

C	ISSUE FOR ZONING	TS	SW	2021.08.10
B	ISSUE FOR ZONING REVISIONS	ZC	SW	2021.04.25
A	ISSUE FOR ZONING	TK	SW	2020.05.12
	SUBMISSIONS & REVISIONS	BY	APPD	YYYY.MM.DD

PROJECT
109-21 PLEASANT ST

SHEET TITLE
ZONING PLAN

PROJECT NO
19115105

DRAWING NO
Z001

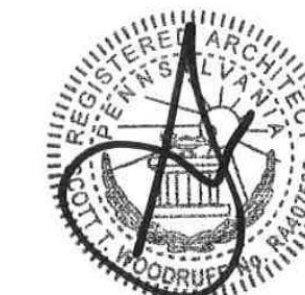
REVISION
C

SCALE
As indicated

COPYRIGHT RESERVED

COPYRIGHT 2021 BY DESIGNBLENDZ ARCHITECTURE, LLP, 4001 MAIN ST, SUITE 310, PENNSYLVANIA, PA 19127, PHONE NUMBER 215-995-0228. ALL RIGHTS RESERVED. THE PLANS, ELEVATIONS, DRAWINGS, ILLUSTRATIONS AND OTHER MATERIAL CONTAINED WITHIN THIS SET ARE THE PROPERTY OF DESIGNBLENDZ ARCHITECTURE, LLP, AND MAY NOT BE REPRODUCED EITHER IN OR WHOLLY, NOR ARE THEY TO BE ASSIGNED TO ANY THIRD PARTY, WITHOUT THE EXPRESS WRITTEN PERMISSION OF DESIGNBLENDZ ARCHITECTURE, LLP. WRITTEN DIMENSIONS ON THE DRAWING SHALL HAVE PRECEDENCE OVER SCALED DIMENSIONS. CONTRACTORS SHALL VERIFY, AND BE RESPONSIBLE FOR ALL DIMENSIONS AND CONDITIONS ON THE JOB, AND THIS OFFICE MUST BE NOTIFIED OF ANY VARIATIONS FROM THE DIMENSIONS AND CONDITIONS SHOWN ON THESE DRAWINGS. ALL SHOP DRAWINGS MUST BE SUBMITTED TO DESIGNBLENDZ ARCHITECTURE, LLP FOR APPROVAL BEFORE PROCEEDING WITH FABRICATION.

SEAL



PROJECT ADDRESS

109-21 PLEASANT ST
PHILADELPHIA, PA
19119

C	ISSUE FOR ZONING	TS	SW	2021.08.10
B	ISSUE FOR ZONING REVISIONS	ZC	SW	2021.04.25
A	ISSUE FOR ZONING	TK	SW	2020.05.12
SUBMISSIONS & REVISIONS		BY	APPD	YYYY.MM.DD

PROJECT

109-21 PLEASANT ST

SHEET TITLE

ZONING ELEVATIONS

PROJECT NO

19115105

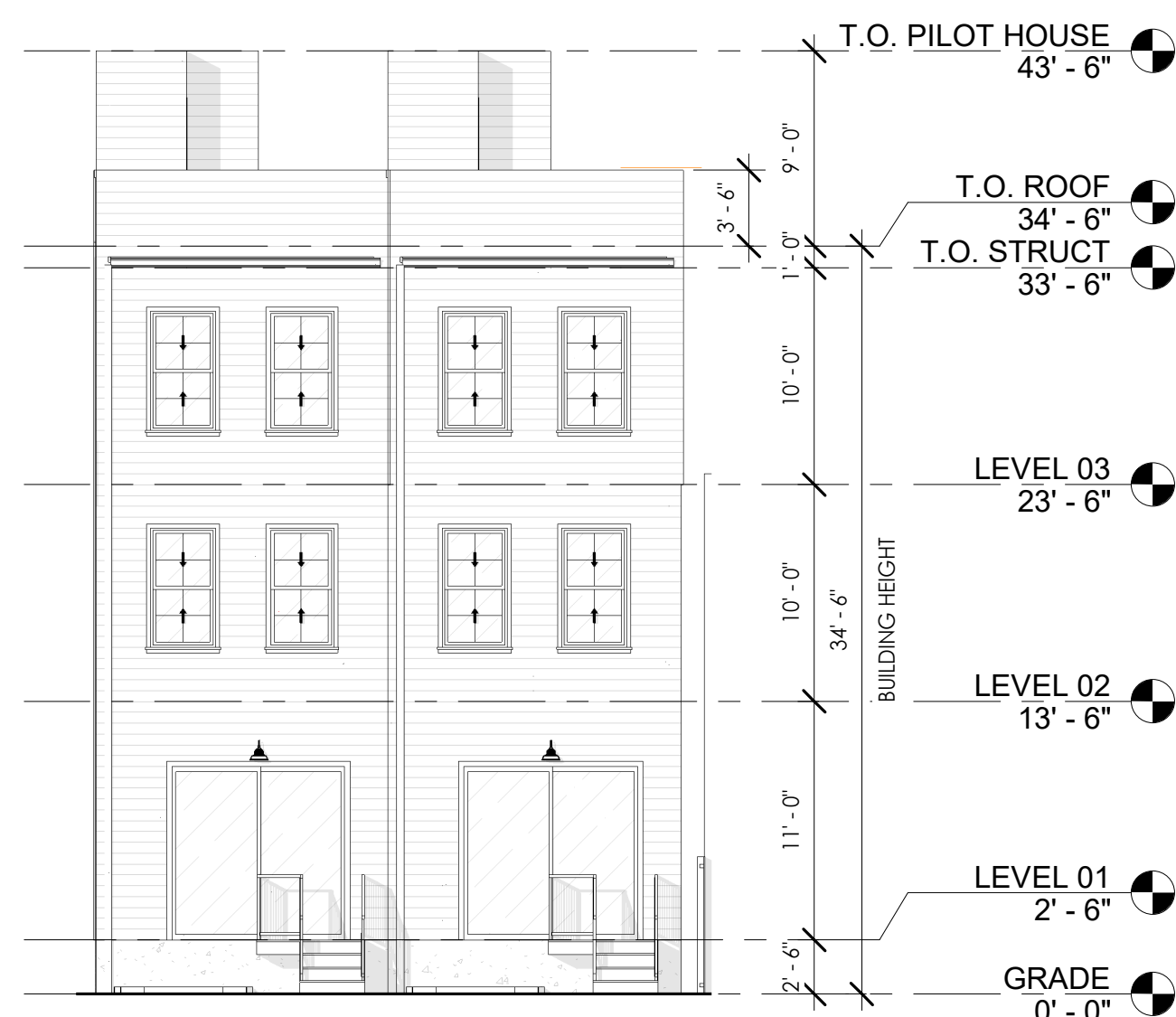
REVISION

C

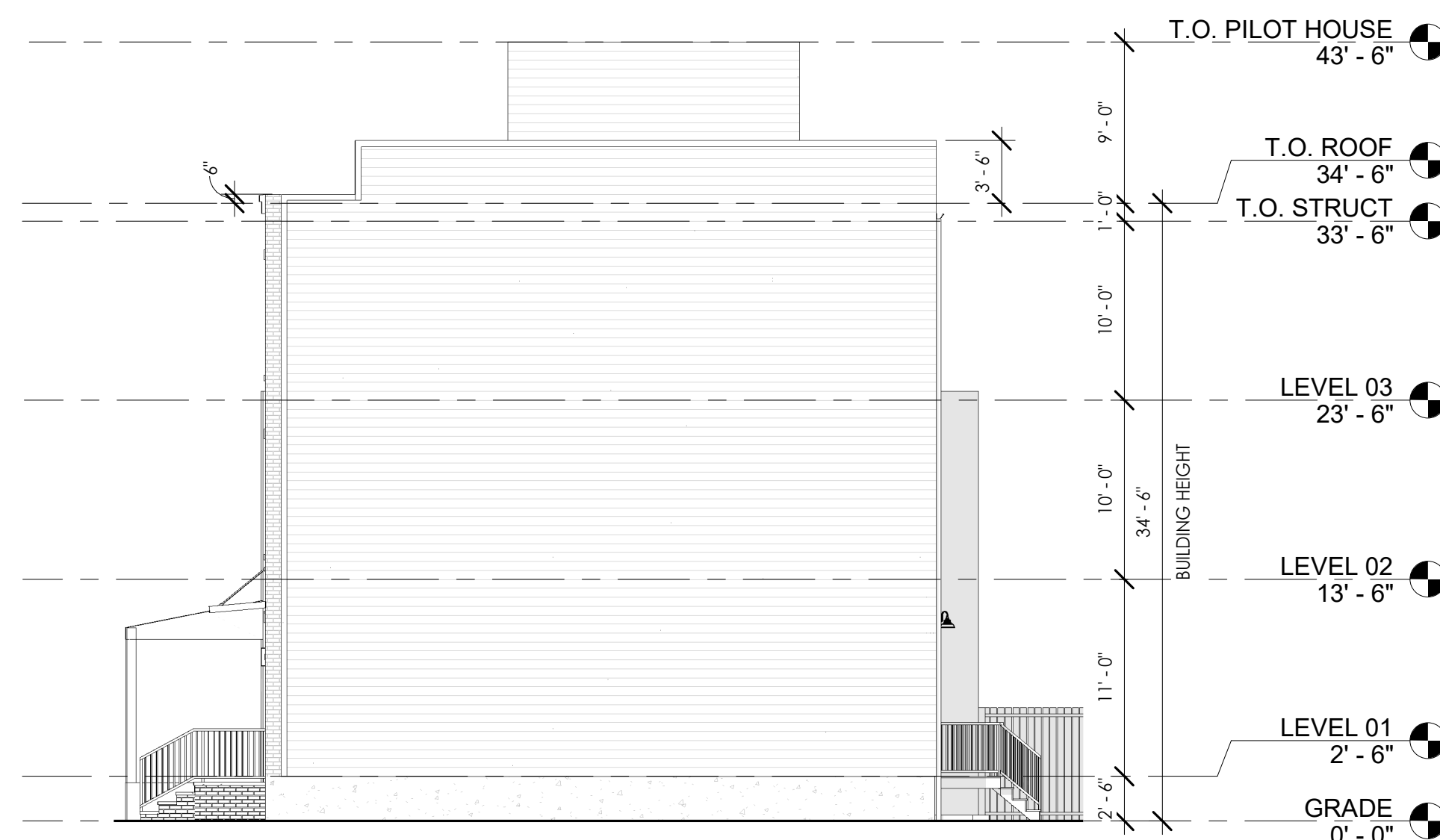
SCALE

1/8" = 1'-0"

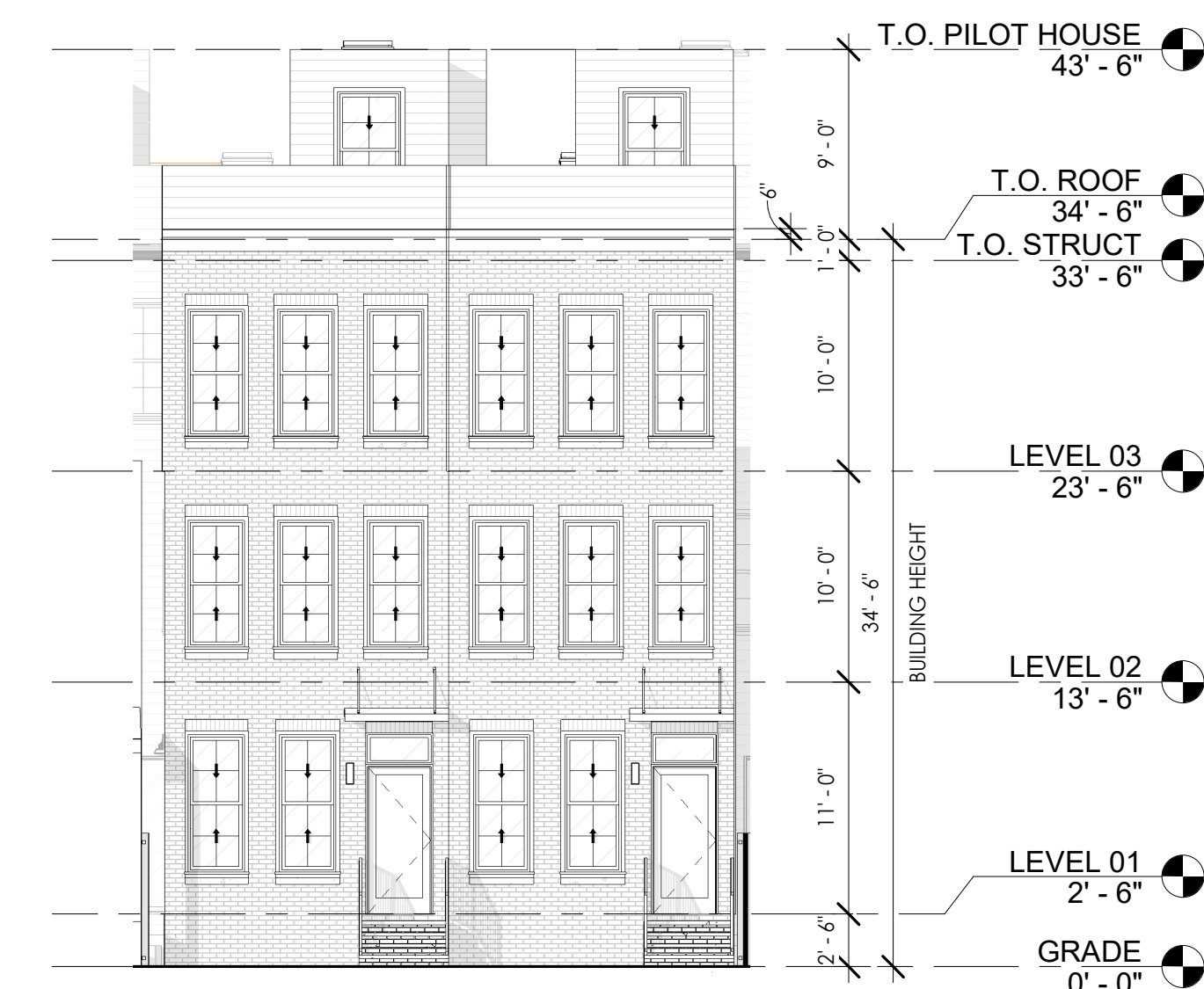
Z002



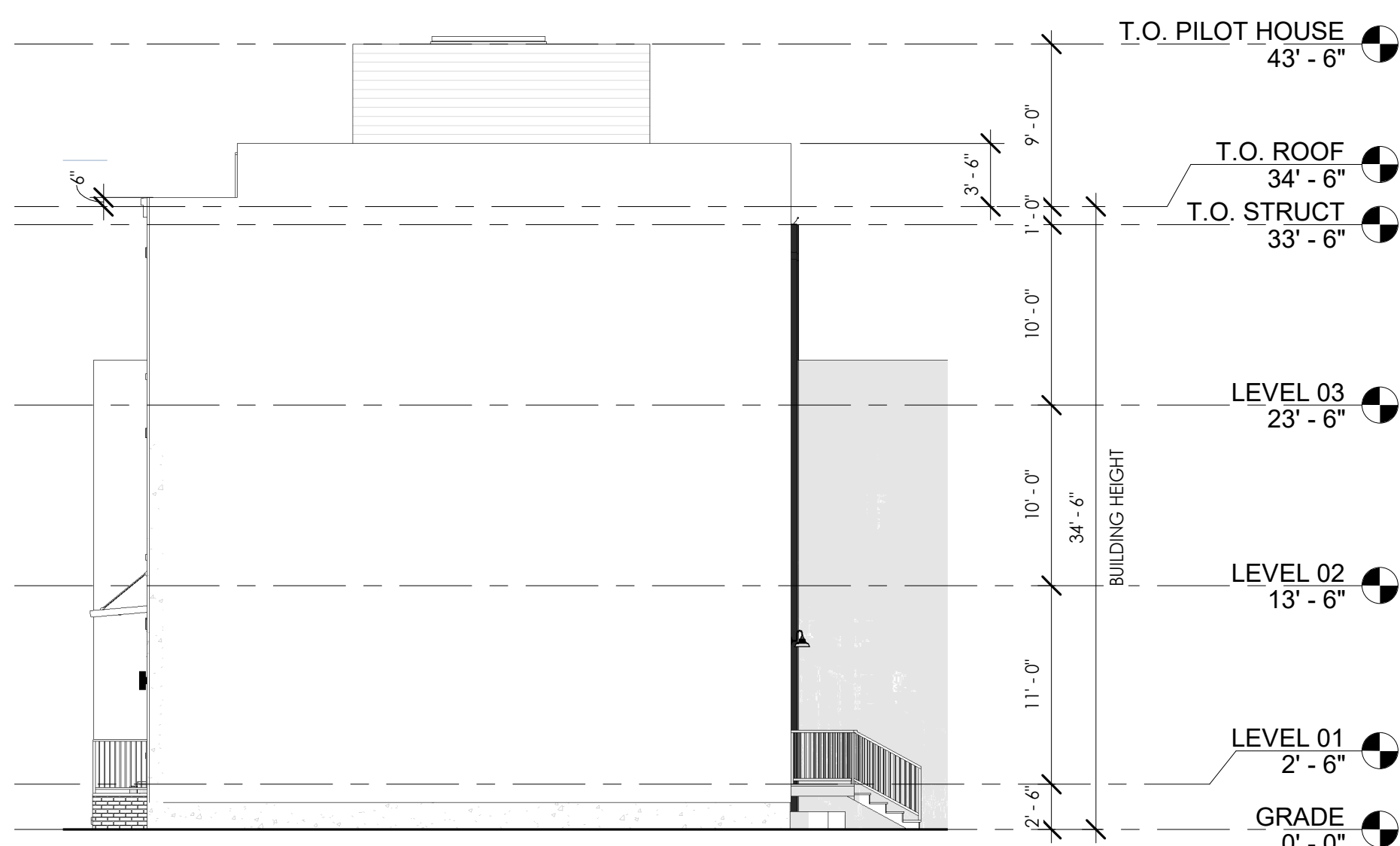
6 | MEEHAN AVE REAR - ZONING
Z002 | 1/8" = 1'-0"



4 | MEEHAN AVE SIDE - ZONING
Z002 | 1/8" = 1'-0"



3 | MEEHAN AVE FRONT - ZONING
Z002 | 1/8" = 1'-0"



5 | PLEASANT ST SIDE - ZONING
Z002 | 1/8" = 1'-0"



2 | PLEASANT ST REAR - ZONING
Z002 | 1/8" = 1'-0"



1 | PLEASANT ST FRONT - ZONING
Z002 | 1/8" = 1'-0"

SCALE 1/8" = 1'-0"

